

# ePadLink<sup>®</sup>

## ePad RemoteFX Support Guide

# ePadLink<sup>®</sup>

## ePad RemoteFX Support Guide

### Table of Contents

<b>1.0 – Overview .....</b>	<b>3</b>
<b>2.0 – Set-Up Procedure .....</b>	<b>3</b>
<i>Enable USB Redirect.....</i>	<i>3</i>
<i>Connect to the RemoteFX Server .....</i>	<i>3</i>
<i>Test Signing with the Generic Test Program .....</i>	<i>6</i>

## 1.0 – Overview

Microsoft Remote Desktop Services supports USB redirection functionality on Microsoft servers with Windows 2012 or later. On the client side, the Windows 7 Pro SP1, Windows 8.1, and Windows 10 desktops are equipped with the RemoteFX feature.

On the server side, the application and the ePad Universal Installer driver should be installed on the core image, so that all the cloned VDI (Virtual Desktop Image) have the application and driver as well.

ePadLink ePad devices are compatible with RemoteFX protocol. Continue below with steps to set-up on the client side.

## 2.0 – Set-Up Procedure

### Enable USB Redirect

RemoteFX USB redirection supports most common types of USB devices. Enabling it requires setting the RDP redirect policy through Local Group Policy Editor (gpedit from the command prompt on Windows 7 Pro, Windows 8.1, Windows 10).

Once the Local Group Policy dialog displayed, navigate to Computer Configuration, Administrative Templates, Windows Components > Remote Desktop Services > Remote Desktop Connection Client > RemoteFX USB Device Redirection. Set *Allow RDP redirection of other supported RemoteFX USB devices from this computer* to “Enabled”. Set RemoteFX USB Redirection Access Rights to “Administrator and Users,” then select OK and close the policy editor.

### Connect to the RemoteFX Server

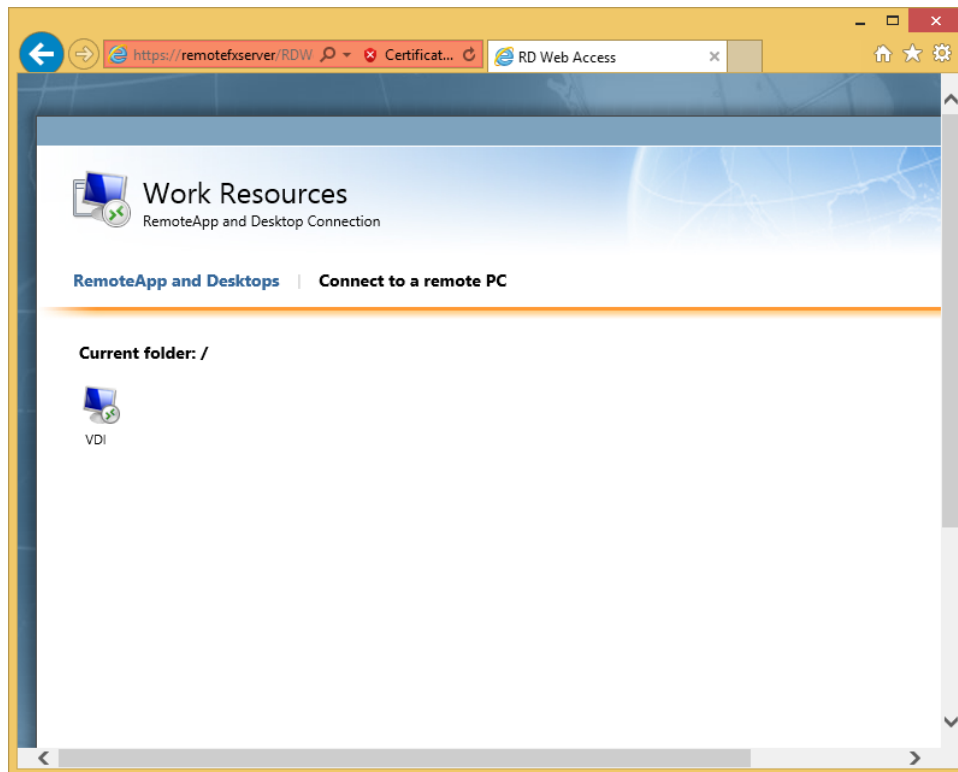
Have your IT manager provide connection information to the RemoteFX server, or use the following information as an example:

From a web browser, enter `http://<server name>/RDWeb`. If connecting on an internal network a screen may show up informing you of an insecure connection due to lack of an SSL certificate. If this occurs select “continue to this website (not recommended)” to continue.

The VDI (Virtual Desktop Image) folder will display (the folder name may differ). Click on the VDI icon; in the login dialog, enter user name and password to login to the VDI.

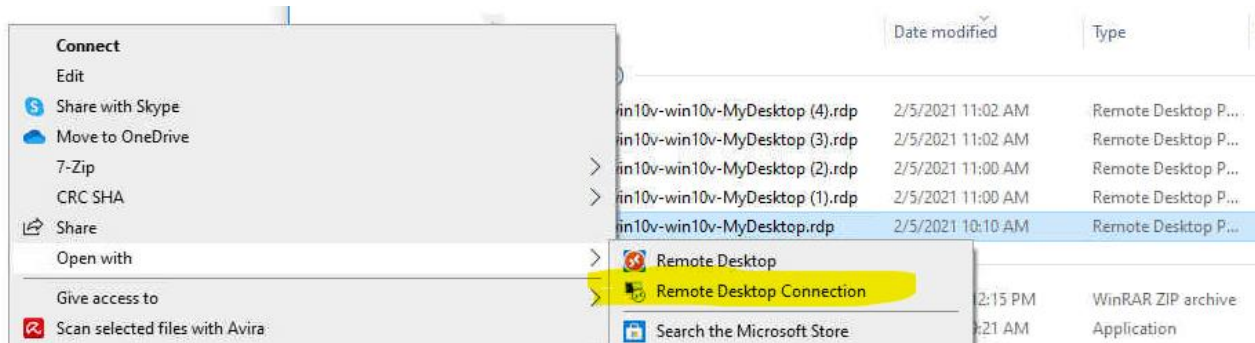
# ePadLink®

## ePad RemoteFX Support Guide



When clicking on the “VDI”, a file with the “rdp” suffix will be downloaded to the client system; it needs to be opened with “Remote Desktop Connection” as the diagram shows.

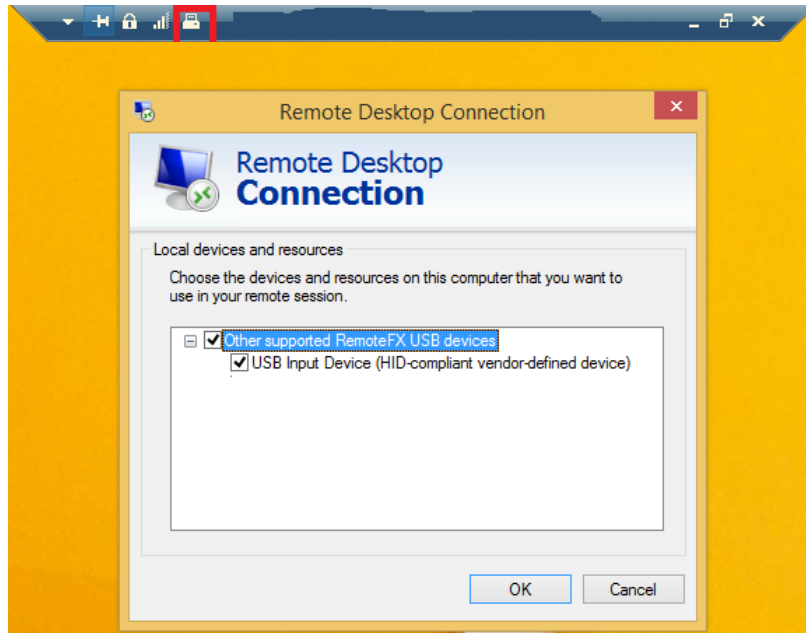
**Note:** You must select Remote Desktop Connection; Remote Desktop does not support Remote FX USB redirection. You may need to log in again to access the desktop.



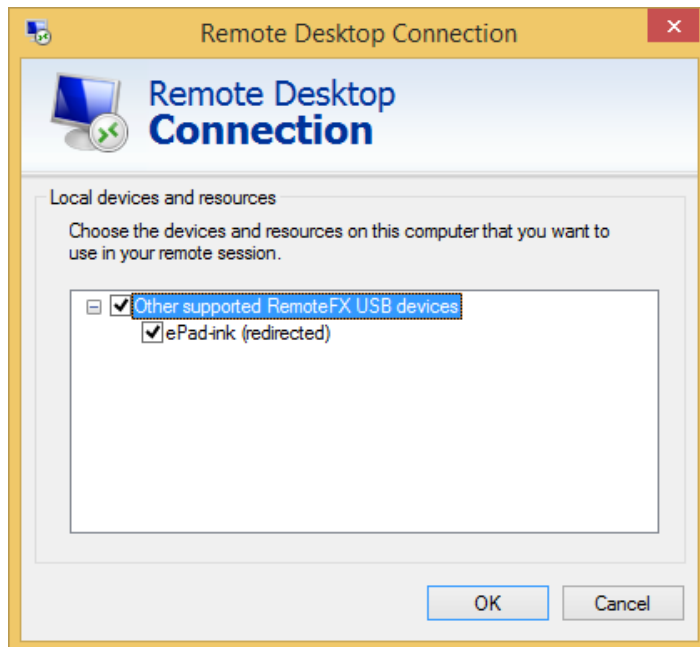
# ePadLink<sup>®</sup>

## ePad RemoteFX Support Guide

After signing in, the virtual desktop will appear:



In the toolbar at the top of the screen, select the computer icon (highlighted in red above). A Remote Desktop Connection dialog will display RemoteFX USB devices. Check the "USB Input Device" and press OK. Then, click the computer icon again; the system will recognize the devices and display their names. Press OK to continue.



# ePadLink<sup>®</sup>

## ePad RemoteFX Support Guide

### Test Signing with the Generic Test Program

The Generic Test Program can capture the signature from the ePad device connected to your local computer.

*Note: No ePad driver is required on the client machine.*

